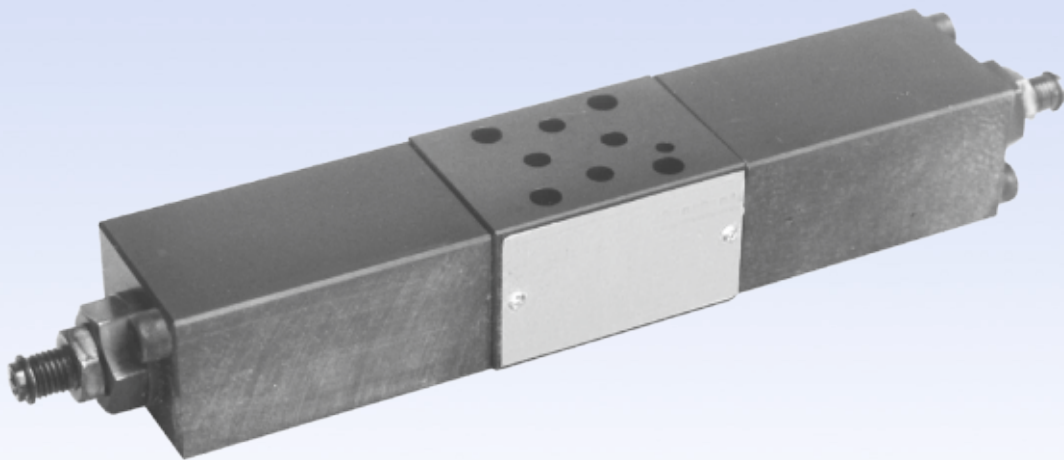


Anti-Shock Valve Hydraulic Motor for Bent Axis Motors

Anti-Shock Valve for Hydraulic Bent Axis Piston Motors

Designation;
Anti-Shock



www.goldhydraulics.com

Anti-Shock Valve for Bent Axis Motors

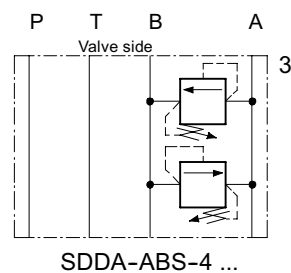
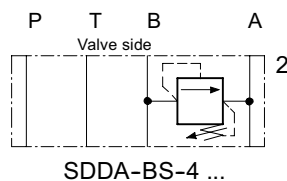
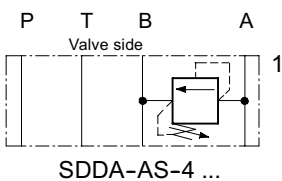
1. Description

Series SDDA ... S-4 units are stack mounting anti-shock cross-line relief valves which relieve A to B and/or B to A. They have fast response times, seat valves with near zero-leakage, and

they have the full flow rating of the size 2 range. The \varnothing 3 mm location pin on the actuator face of the valve prevents incorrect mounting. Valves are shipped

as standard with screw adjustment. Alternatively, they can be supplied with adjustment by hand knob, or lockable hand knob.

2. Symbols



3. Main characteristics

Designation		pressure relief slice valve
Design		direct acting seat valve
Mounting method		stack mounting
Size		ISO 4401-02-01 interface
Weight	kg	Model ...AS.../ ...BS...: 0,77/ Model ...ABS...:1,15
Mounting attitude		unrestricted
Flow direction		see symbols
Operating pressure range	bar	... 250 in P, A and B; ... 160 in T
Adjustment ranges	bar	code 25 = ... 250 code 16 = ... 160 code 10 = ... 100 code 04 = ... 040 code 02 = ... 020
Flow rate, Q max.	l/min	25
Fluids		HL and HLP hydraulic oils to DIN 51 524; for other fluids, please consult BUCHER
Fluid temperature range	_C	-25 ... +80
Ambient temperature	_C	-25 ... +80

Replaces: D-6.60

1/4

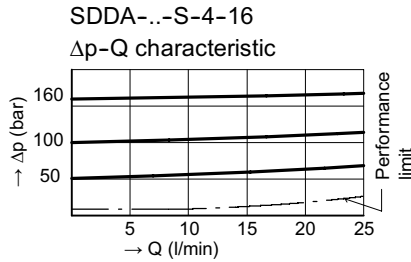
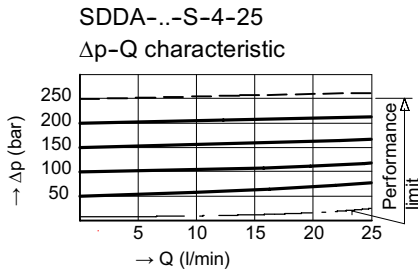
Classification: 430.10.62.10

Reference: 400-P-300101-EN-/09.2015

Anti-Shock Valve for Bent Axis Motors

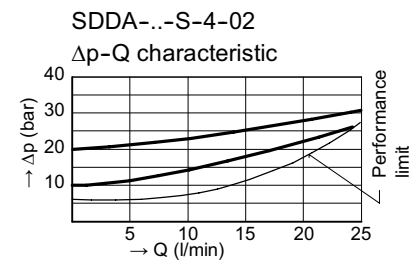
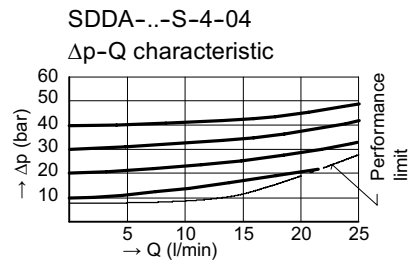
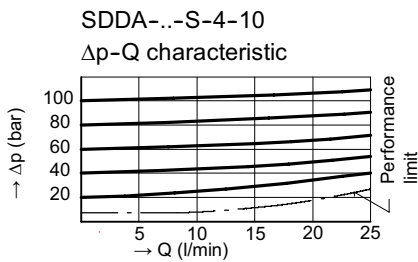
4. Performance graphs

Measured with oil viscosity 33 mm²/s (cSt)



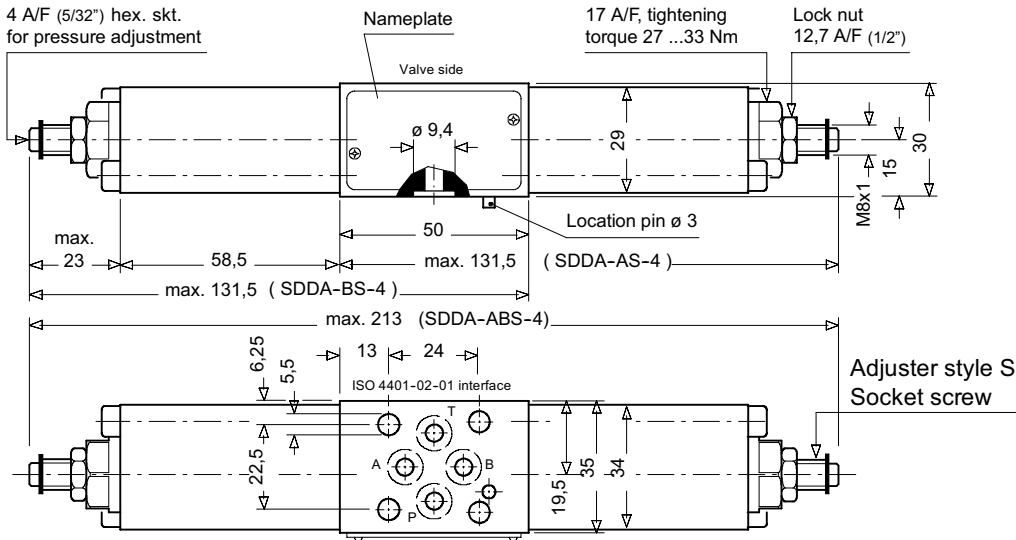
Rate of pressure change when turning the adjusting screw:

SDDA-...S-4-25: 1 turn	≅ app. 45 bar
SDDA-...S-4-16: 1 turn	≅ app. 30 bar
SDDA-...S-4-10: 1 turn	≅ app. 18 bar
SDDA-...S-4-04: 1 turn	≅ app. 6 bar
SDDA-...S-4-02: 1 turn	≅ app. 2,5 bar



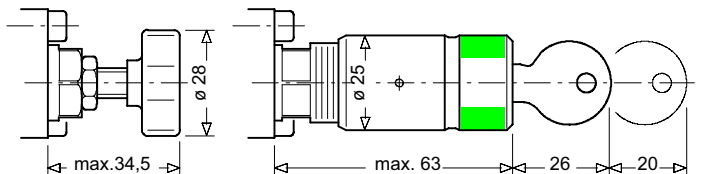
5. Dimensions

4 A/F (5/32") hex. skt. for pressure adjustment



Adjuster styles / OPTIONAL

Conversion kit for styles S, H and Z5 - see related data sheets



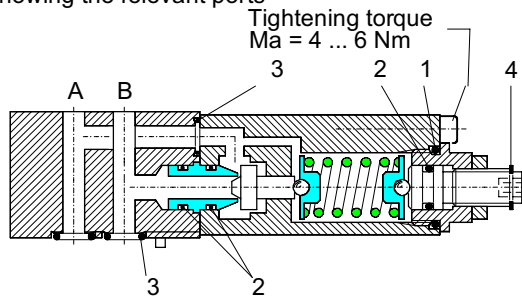
Adjuster style H
Hand knob

Adjuster style Z5, lockable hand type 2H.

Anti-Shock Valve for Bent Axis Motors

6. Schematic section

showing the relevant ports



Seal kit no. DS-212, comprising *):

Itm.	Qty.	Qty.	Description	Size
1	2*)	1	O-ring no. 016	● 15,60 X 1,78 N90
2	6*)	3	O-ring no. 009	● 5,28 x 1,78 N90
3	6*)	5	O-ring no. 010	● 6,07 x 1,78 N90
4	2*)	1	Snap ring	Type SS ●7

SDDA-AS/BS-4
SDDA-ABS-4

7. Installation and servicing

All installation and servicing must be carried out with care, and by qualified personnel only. At installation, be sure to mount the valve the correct way up.

Do not confuse the flat surface (directional valve side) and the surface with O-ring counterbores (actuator side). When changing seals, the new seals

should be thoroughly oiled or greased before fitting them to the valve. Use the correct tightening torques when fitting the threaded housing and cap screws.

8. Ordering code

Ex.

S	D	D	A	-	AB	S	-	4	-	25	-	S	-	-	-	1
---	---	---	---	---	----	---	---	---	---	----	---	---	---	---	---	---

- S = stacking valve
- D = pressure relief function
- D = direct acting
- A ... Q = standard model per current data sheet
- Z ... R = special features by arrangement
- A = relief function A to B
- B = relief function B to A
- AB = relief function A to B and B to A
- S = anti-shock, cross-line function
- 4 = ISO 4401-02-02 interface
- 25 = pressure range ... 250 bar
- 16 = pressure range ... 160 bar
- 10 = pressure range ... 100 bar
- 04 = pressure range ... 40 bar
- 02 = pressure range ... 20 bar
- S = with hex. skt. screw adjuster (standard)
- H = with hand knob adjuster type H
- Z = with lockable hand knob adjuster type Z5
- (Blank) = Nitrile seals (standard)
- Z = Viton seals
- For special seals, please consult BUCHER
- 1 ... 9 = design number (omit when ordering)

9. Related data sheets

Old no.	New no.	
i - 17.00	400-P-015101-E	Procedure for changing the Adjuster Style
i - 30	400-P-030101-E	ISO 4401-02-01 interface

Complete Product Range

Bent Axis Piston Motors

- A9MD** (DIN) Bent Axis Motors
- A9MO** (ISO) Bent Axis Motors
- A9MS** (SAE) Bent Axis Motors
- A9ML** (SAE2) Bent Axis Motors
- A9MF** (Fixed Plugin) Bent Axis Motors
- A10M** (HYBRID) Bent Axis Motors
- A7GM** Hydraulic Gear Motors
- A7GMT** Tandem Hydraulic Gear Motors

Bent Axis Piston Pumps

- A8PA** (Aluminum) Bent Axis Pumps
- A8PD** (DIN) Bent Axis Pumps
- A8PO** (ISO) Bent Axis Pumps
- A8PS** (SAE) Bent Axis Pumps
- A8PF** (Fixed Plugin) Bent Axis Pumps
- A10** (HYBRID) Bent Axis Pumps
- A11** (ISO2) Bent Axis Pumps
- A11** (SAE2) Bent Axis Pumps

Variable Displacement Pumps

- A12V** Variable Displacement Piston Pumps

Dual Flow Piston Pumps

- A8PL** (DIN) Dual Flow Pumps

Axial Piston & Gear Pumps

- A4PP** Axial Hydraulic Piston Pumps
- A6HP** High Pressure Piston Pumps
- A7GP** Hydraulic Gear Pumps
- A7GPT** Tandem Hydraulic Gear Pumps

Valve (ByPass) (Flushing) (Cavitation)

- Circulation Valve
- ByPass Valve
- Anti-Cavitation Valve
- Flushing Valve
- LS Valve
- AntiShock Valve
- Speed Sensor

Hydraulic Spare Parts

- Suction Fittings
- Couplers
- Adapters
- Flanges
- Power Take Off
- Monoblock Valve
- Section Valve

Hydraulic Pumps, Motors

Bent Axis Hydraulic Piston Motors, Bent Axis Hydraulic Piston Pumps, Piston Pumps, Variable Displacement Piston Pumps, Variable Displacement Piston Motors, Axial Piston Pumps, High Pressure Piston Pumps, Gear Pumps, Gear Motors, Hydraulic Valve.

www.goldhydraulics.com

Address;

HYDROGOLD HİDROLİK PNM. MAK. SAN. TİC. LTD. ŞTİ.

Address; (Fabrika, İmalat)

Fevzicakmak Mah. Sıla Cad. Kobisan 3 San. Sit.

No: 73 / C Karatay – Konya, PO Code; 42050, Türkiye

Address; (Montaj, Sevkiyat)

Fevzicakmak Mah. Sıla Cad. Kobisan 3 San. Sit.

No: 71 / AD Karatay – Konya, PO Code; 42050, Türkiye

Phone; +90 551 148 26 88

mail@goldhydraulics.com